

60GHz Human Fall Detector Datasheet



Product Description



60GHz Human Fall Detector is based on millimeter wave radar system to detect the static perception of human biological movement and human biological perception.

It is anonymous and used in various spaces such as toilets, bathrooms and hotels.



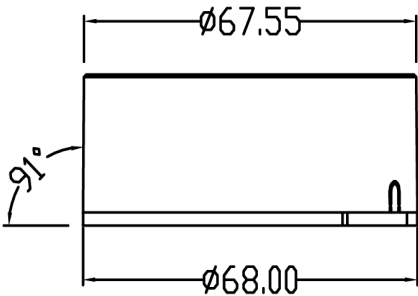
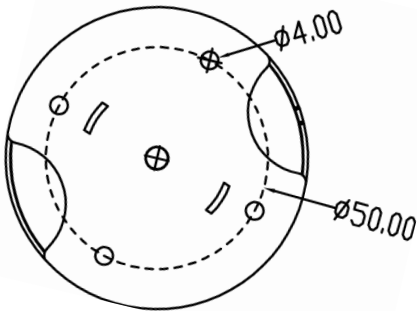
Product Features

- 60GHz high-precision millimeter wave radar technology
- 200-400cm effective detection distance, high sensitivity
- Anonymous identification, zero privacy risk
- Built-in intelligent learning algorithm to intelligently filter abnormal fluctuations
- LoRaWAN connection, no wiring required
- IP65 protection level
- ABS material, lightweight and durable
- Ultra-low power consumption, safe and harmless

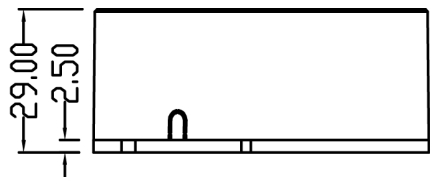
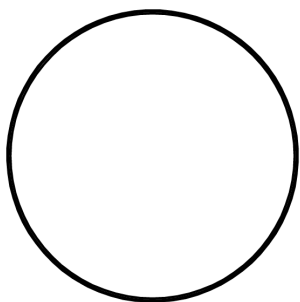


Product Dimensions

Unit: mm



60GHz Human Fall Detector Datasheet



Specifications

Technology	60 Hz millimeter radar
Probe	3DSQT-60GmmWave probe
Accuracy	98%
Operating Temp.	-10 ~ 60°C
Operating Humidity	5% ~ 80% RH (non-condensing)
Response Time	<1s
Power Supply	12V DC, 2.5W
Material	ABS
Detection Range	Maximum 3M*3M (centered installation)
Ingress Protection	IP65
Dimension	Φ65*25mm
Installation Height	200-400CM
Appearance	White
Installation	Wall mounting



Email: iot@neuroncloud.ai
Website: <https://iot.neuroncloud.ai>
Address: [Rm 335-337, Core Building 1E, Hong Kong Science Technology Park, Hong Kong](#)